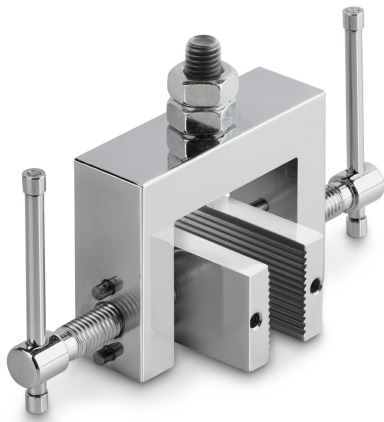


# KERN AC 18

# KERN

Screw tension clamp with 2 wide jaw grips for tension and extraction tests



## Pictograms

### STANDARD



## Category

Brand	Sauter
Product category	Clamp
Product group	Screw tension clamp

## Construction

Dimensions completely mounted (W×D×H)	160×100×140 mm
Material	steel
Mounting - force dissipation	External thread M10
Tensile/compressive force [Max]	5 kN
Maximum clamp width	60 mm
Clamping width	33 mm

## Environmental conditions

Storage temperature [Min]	-10 °C
Storage temperature [Max]	40 °C

## Packing & Shipping

Readability force [d] (N)	1 d
Dimensions packaging (W×D×H)	160×100×140 mm
Net weight	0,743 kg
Shipping method	Parcel service
Net weight approx.	0,75 kg
Gross weight approx.	0,80 kg
Shipping weight	0,753 kg